

DZKit Sienna XL 250W HF+6 Transceiver kit Soldering required!

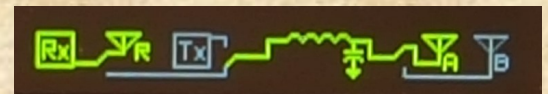


True SDR on transmit and receive—incorporates the QRP-Labs QMX+ transceiver inside and adds a beautiful chassis and front panel, simulated analog backlit meters, voltage conditioning and more! Base model is QRP only, then add the optional 10W and 250W amps!

Acclaimed ergonomics!

Strong, serviceable chassis

Color touch displays and logically grouped controls make Sienna XL easier to use than most rigs.



See antenna status at a glance. Tx path turns red on transmit



Change meter scales by tapping the meter

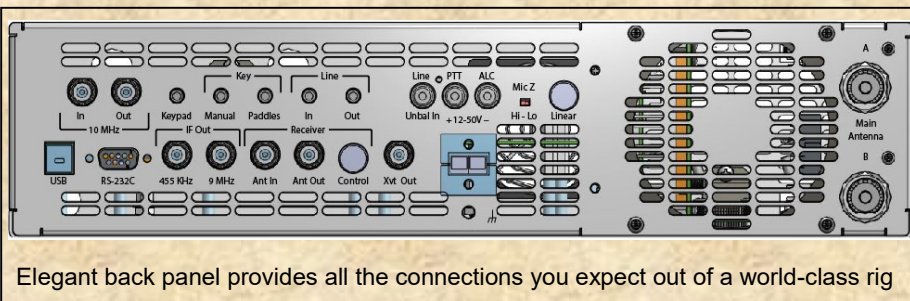
Outstanding audio on transmit and receive: Receiver audio stage includes bhi DSP Noise Cancelling technology: A complete mixed-signal audio system consisting of a dual Harvard core, a patented high-resolution floating-point coprocessor and an Input/output processor which yields 88 dB of dynamic range and exceptionally low system noise. Removes background noise, makes signals stand out! **High performance class AB stereo audio amp** with .02% THD at 4W output on 'phones and speakers simultaneously, with compression to eliminate clipping at high volume. **Extremely low noise audio amps and switching circuits in transmitter and receiver**, for clean reproduction of line-in and mic audio. **3-band Parametric equalizer** in receive audio path. **Balanced mic audio** works great with Heil PR-781 XLR mic.

Base model — use your own QMX+ transceiver (mounts inside): \$4500

10W amp — 10W amp and 250W-rated low pass filters, SWR meter T/R switching: \$500

250W amp — 250W power amp plus 10W low pass filters. Requires external 48VDC power supply: \$1000

Note: antenna tuner is not included. We recommend the LKDG AT 600 Pro II.



And more!

Separate band data outputs for Tx and Rx. Linear amp control. Transverter-ready. Two 10dB preamps. One 10dB attenuator. Rx Antenna in and out. Line in and line out stereo audio jacks. Manual and paddle inputs active simultaneously from front and rear panel. Remote controllable via RS-232 and provides USB jack for connection to QMX+. Upgradeable firmware. Serviceable yourself! Detailed Assembly, User's and Service manuals and the famous DZKit Worldwide Support!

Fun to build. Easy to use. High performance.

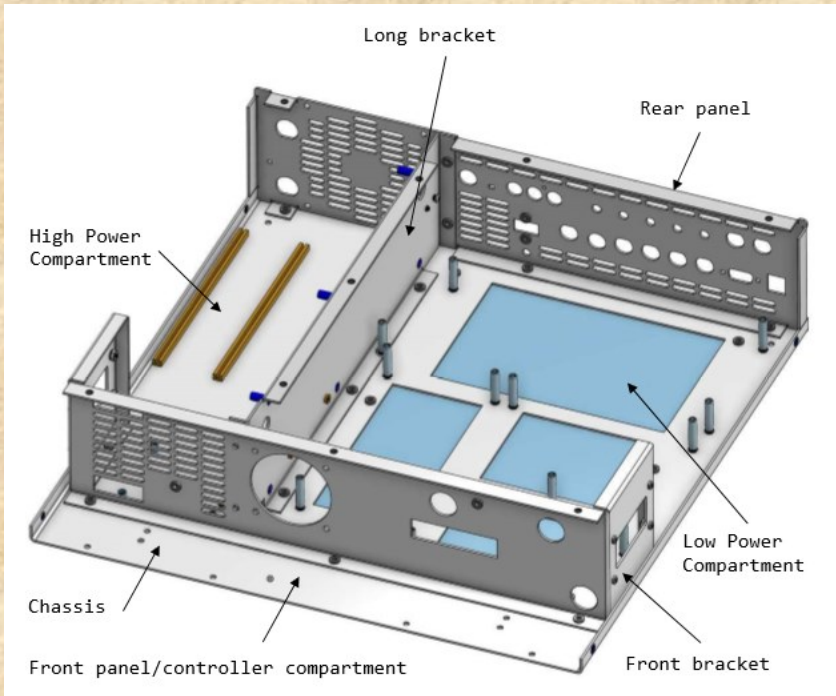
Features not available on other rigs. Made in the USA!



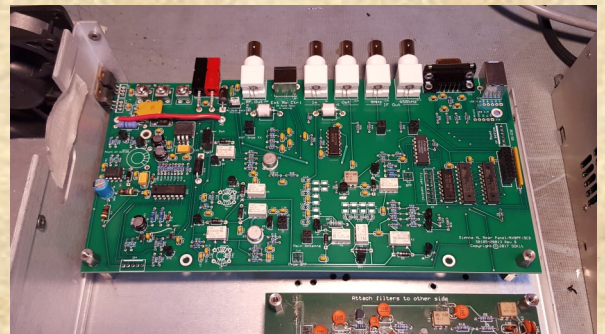
The DZ Company, LLC
6151 Panoramic Dr. • Loveland, CO 80537
www.dzkit.com • 877-HAM-SHACK • sales@dzkit.com



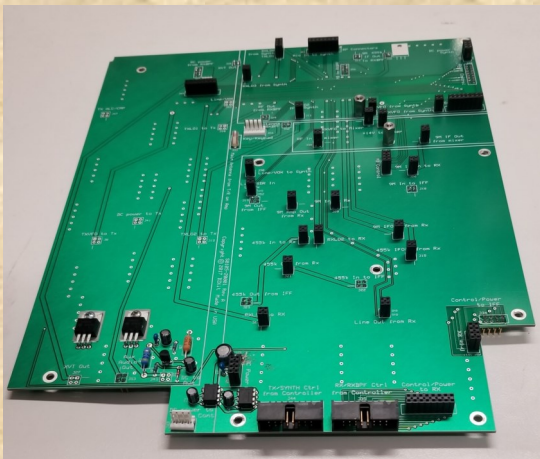
What do you get to build?



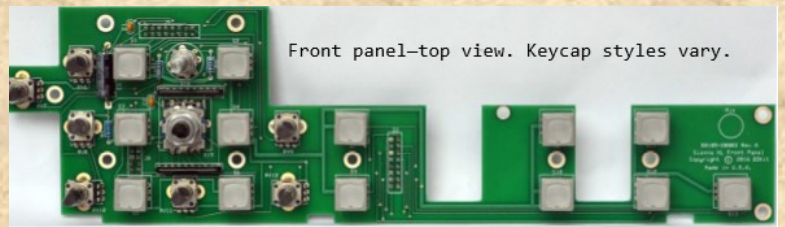
Chassis



DC Power conditioning/RF Front end/Rear Panel board.



Motherboard



Front panel boards



250W PA

We preassemble and test the Controller board. All others are partial or complete kits. SMT is pre-loaded.

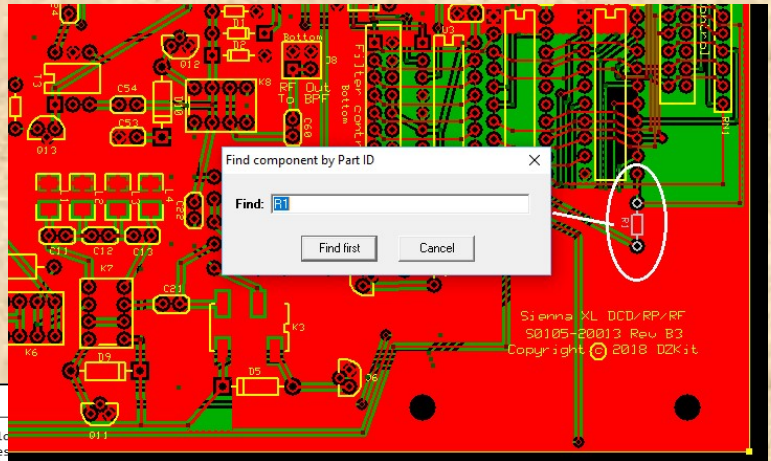


The DZ Company, LLC
6151 Panoramic Dr. • Loveland, CO 80537
www.dzkit.com • 877-HAM-SHACK • sales@dzkit.com



DZKit assembly manuals have all the detail you expect out of a world-class kit! Our step-by-step instructions and pictorials are easy to follow and make kit-building fun!

An electronic version of our circuit boards is included so that you can rapidly find the location of parts. All you need to do is run free ExpressPCB software and load the appropriate circuit board.

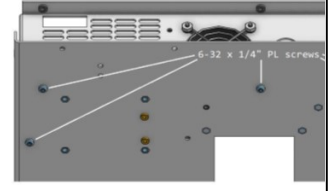
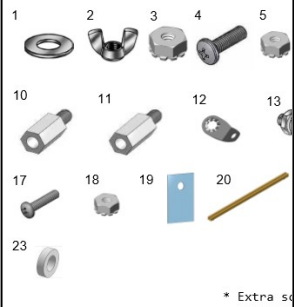


Page 13

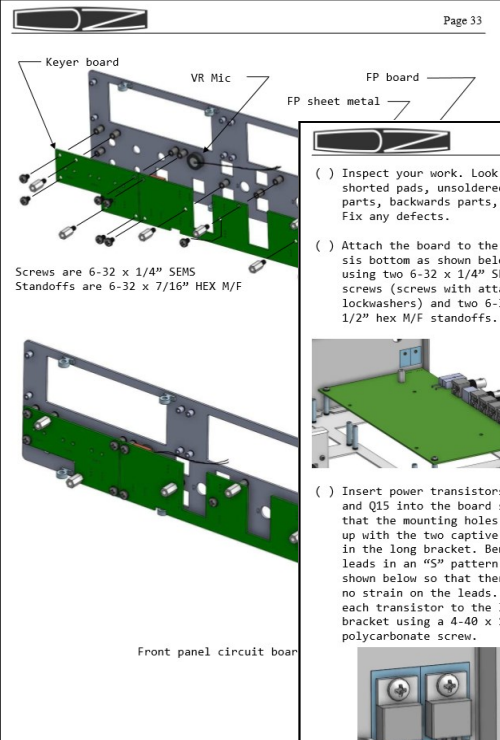
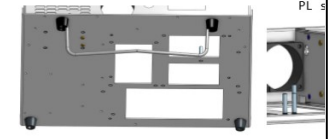
Chassis Parts

Item	Description	Stock bin	Quantity
1	Hardware #10 Flat Washer 1/2in OD, .05in Thick Zinc-Plated Steel	473	2
2	Hardware 10-32 Wing Nut Zinc-Plated Steel		
3	Hardware 10-32 KEPS Nut SS		
4	Hardware 10-32 x 5/8in PH Phillips M/S SS		
5	Hardware 6-32 KEPS Nut SS		
6	Hardware 6-32 x 1/4in PH Phillips M/S SS PL		
7	Hardware 6-32 x 1/4in PH Phillips M/S SEMS S		
8	Hardware 6-32 x 1/2in PH Phillips M/S SEMS S		
9	Hardware 6-32 x 1/4in FH 100 degree Phillips B		
10	Hardware 6-32 x 7/16in Hex M/F Spacer SS		
11	Hardware 6-32 x 1/2in Hex M/F Spacer SS		
12	Hardware #6 internal tooth lockwasher with sold		
13	Hardware 4-40 x 5/16in Jackscrew, washer, loc		
14	Hardware 4-40 x 1/4in PH Phillips M/S Polycarb		
15	Hardware 4-40 x 1/4in PH Phillips M/S SS PL		
16	Hardware 4-40 x 1/4in PH Phillips M/S SS		
17	Hardware 4-40 x 1/2in PH Phillips M/S SS		
18	Hardware 4-40 KEPS Nut SS		
19	Hardware Insulator with adhesive back for TO-2		
20	Hardware PCB card guide fin plastic		
21	Hardware Anderson Powerpole mounting clamp		
22	Hardware 60mm metal finger guard		
23	1/16" Nylon spacer		

- () Attach the front bracket to the chassis bottom using three 6-32 x 1/4" PL screws in the center and one on each side under the speakers. (Note: "PL" refers to the Nylon patch compound that is on the threads. Do not use the screws with attached lockwashers, called "SEMS"). See below.
- () Route the left speaker cable under the fan and into the low power compartment.

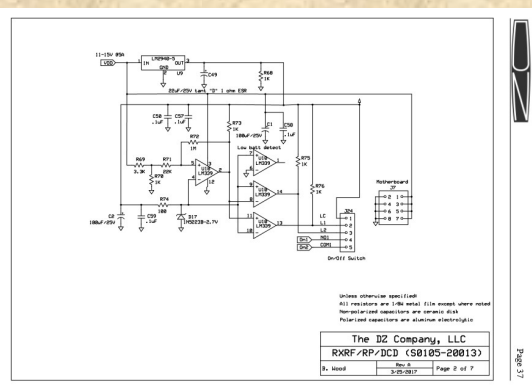


- () Locate the "tilt ball" with mounting hardware. Follow mounting instructions provided with the ball. Refer to the drawing below for mounting locations of the front feet (with ball) and rear feet.



- () Locate the location to fix two adhesives over the two small holes toward the back, on the side of the chassis. Insertive the adhesive into the holes and the adhesive extends the length of the chassis.

- Page 44
- () Inspect your work. Look for shorted pads, unsoldered parts, backwards parts, etc. Fix any defects.
 - () Attach the board to the chassis bottom as shown below, using two 6-32 x 1/4" SEMS screws (screws with attached lockwashers) and two 6-32 x 1/2" hex M/F standoffs.
 - () Repeat the previous step using the red wire in the red/black twisted pair power cable (S0105-00125), connecting it to the screw terminal marked +14V.
 - () Attach both black wires to the ground terminal. See photos below.
 - () Remove the four screws from the screw terminals on the 48V-14V DC-DC converter board. Insert a screw through each of the four wires coming from the DCD board and reinsert and tighten them as follows:
Red/black twisted pair:
Red: +14V Black: GND
Orange/black twisted pair:
Orange: +48V In Black: GND
 - () Solder the transistor leads to the board from the top.



Our User's manual includes detailed instructions on how to use Sienna XL and all I/O commands needed to operate it from a remote control program. Our Service manual includes complete schematics and detailed theory of operation, should you want to understand how it works and service it yourself.



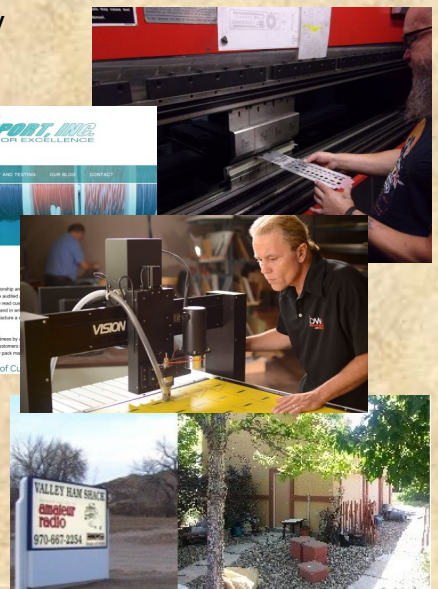
The DZ Company, LLC
6151 Panoramic Dr. • Loveland, CO 80537
www.dzkit.com • 877-HAM-SHACK • sales@dzkit.com



Ten reasons why we know you'll be successful building a DZKit Sienna XL

1. It's made in the U.S. to assure high quality and fast response to any manufacturing issues:

- ✓ Chassis sheet metal is manufactured by a top-notch manufacturing facility in Denver, CO.
- ✓ Cables are made by a top-notch facility in Golden, CO
- ✓ Front panel overlays are made in Illinois
- ✓ Circuit boards are made in Oregon
- ✓ Products are designed, tested and kitted at our plant in Loveland, CO
- ✓ We buy parts from American distributors (e.g., Mouser, Digikey) and directly from many manufacturers, guaranteeing high quality and no "knock-offs".



2. We provide detailed assembly manuals with pictures, drawings and step-by-step instructions. (See previous page)

3. Pre-built boards are fully tested.

4. Firmware is updateable by customers easily as new features or bug fixes are released.

5. No custom IC's except pre-programmed microprocessors are used. All parts are off-the-shelf.

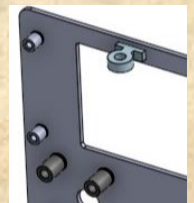
6. Captive nuts/standoffs and screws with built-in lockwashers eliminate tedious mechanical assembly.

7. Surface-mount parts are pre-loaded.

8. We provide hard-to-get or uncommon tools in the kit.

9. Beta testers are used to refine the kit assembly process and provide feedback on usability.

10. Support is just a phone call or email away, with exceptional responsiveness.



YOUR DZKIT 1-YEAR LIMITED WARRANTY

During the first year after shipment, DZ Company will replace or repair free of charge—as soon as practical—any parts which are defective, either in materials or workmanship, and any incorrect or missing parts. You can obtain parts directly from DZ Company by writing us, emailing us or telephoning us. And we'll pay shipping charges to get those parts to you—anywhere in the world.

We warrant that during the first year after shipment, our products, when correctly assembled, calibrated, adjusted and used in accordance with our printed instructions, will meet published specifications. Once assembled, if the product fails to operate correctly, we will help you determine which subassembly requires service. If return is found to be necessary, you must then ship that subassembly, or whole unit if applicable, to the address below at your expense, and we will repair or replace it at our option and return it to you at no charge.

You will receive free consultation (except for the cost of your long distance phone call) on any problem you may encounter in the assembly or use of your DZKit product. Just write us, email us, give us a call, or visit our website and click on "Support". That will give you access to free support. Sorry, we cannot accept collect calls.

Our warranty, both expressed and implied, does not cover damage caused by the use of acid-core solder, water-soluble flux solder (without appropriate washing), or any corrosive or conductive flux or solvent, defective tools, incorrect assembly, misuse, fire, customer-made modifications, floods or acts of God, nor does it include reimbursement for customer assembly or setup time. The warranty covers only DZKit products and is not extended to non-DZ allied equipment or components used in conjunction with our products or uses of our products for purposes other than as advertised.

This warranty applies only to the first owner of the product and is not extended to subsequent owners.

This warranty gives you specific legal rights, and you may also have other rights which vary from state to state.

THE DZ COMPANY, LLC
710 GROVE CT.
LOVELAND, CO 80537

We'll make sure you succeed! The DZKit 1-year warranty includes free consultation with our engineers if any problems come up.



The DZ Company, LLC
6151 Panoramic Dr. • Loveland, CO 80537
www.dzkit.com • 877-HAM-SHACK • sales@dzkit.com

